

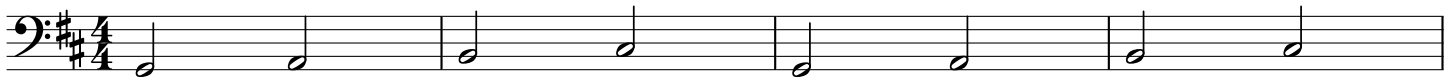
Every Little Thing She Does Is Magic

www.thegroovehacker.com

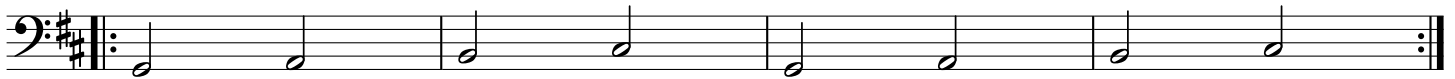
(The Police)

Trascrizione a cura di:
Massimiliano Max Carola

♩ = 85 Intro



5 Verse



9



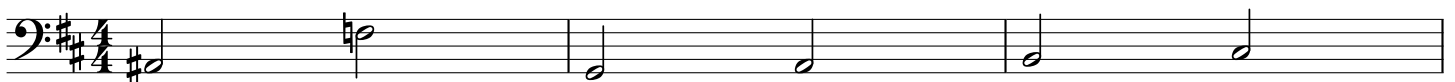
Chorus

13



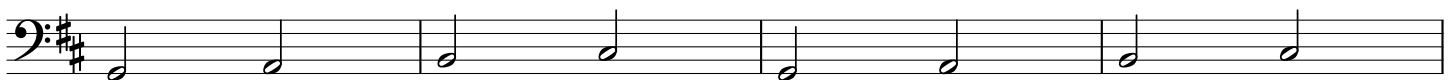
Strum

17



Verse

20



24

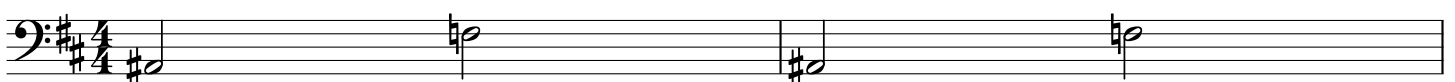


Chorus

28



32



Bridge

34



A musical staff in bass clef with a key signature of two sharps (D major). It contains five measures of music. The first four measures consist of quarter notes: D4, E4, F#4, G4, A4, B4, C5, D5, E5, F#5, G5, A5, B5, C6, D6. The fifth measure contains an eighth-note triplet of D5, E5, F#5, followed by a quarter rest and a quarter note D5.

Chorus

A musical staff in bass clef with a key signature of two sharps. It contains four measures of music. Each measure starts with a quarter note followed by a quarter rest, then an eighth-note triplet. The notes in the triplets are: 1. D5, E5, F#5; 2. D5, E5, F#5; 3. D5, E5, F#5; 4. D5, E5, F#5.

A musical staff in bass clef with a key signature of two sharps. It contains four measures of music. Each measure starts with a quarter note followed by a quarter rest, then an eighth-note triplet. The notes in the triplets are: 1. D5, E5, F#5; 2. D5, E5, F#5; 3. D5, E5, F#5; 4. D5, E5, F#5. The staff ends with a 2/4 time signature change.

Outro

A musical staff in bass clef with a key signature of two sharps and a 4/4 time signature. It contains four measures of music. The notes are: 1. D5, E5, F#5, G5; 2. A5, B5, C6, D6; 3. E5, D5, C5, B4; 4. A4, G4, F#4, E4.

A musical staff in bass clef with a key signature of two sharps. It contains four measures of music. The notes are: 1. D5, E5, F#5, G5; 2. A5, B5, C6, D6; 3. E5, D5, C5, B4; 4. A4, G4, F#4, E4.

A musical staff in bass clef with a key signature of two sharps. It contains four measures of music. The notes are: 1. D5, E5, F#5, G5; 2. A5, B5, C6, D6; 3. E5, D5, C5, B4; 4. A4, G4, F#4, E4.

A musical staff in bass clef with a key signature of two sharps. It contains four measures of music. The notes are: 1. D5, E5, F#5, G5; 2. A5, B5, C6, D6; 3. E5, D5, C5, B4; 4. A4, G4, F#4, E4.

A musical staff in bass clef with a key signature of two sharps. It contains four measures of music. The notes are: 1. D5, E5, F#5, G5; 2. A5, B5, C6, D6; 3. E5, D5, C5, B4; 4. A4, G4, F#4, E4. The word 'gliss.' is written above the final note of the fourth measure.

A musical staff in bass clef with a key signature of two sharps. It contains four measures of music. The notes are: 1. D5, E5, F#5, G5; 2. A5, B5, C6, D6; 3. E5, D5, C5, B4; 4. A4, G4, F#4, E4.

A musical staff in bass clef with a key signature of two sharps. It contains four measures of music. The notes are: 1. D5, E5, F#5, G5; 2. A5, B5, C6, D6; 3. E5, D5, C5, B4; 4. A4, G4, F#4, E4. The word 'gliss.' is written above the final note of the fourth measure.

A musical staff in bass clef with a key signature of two sharps. It contains four measures of music. The notes are: 1. D5, E5, F#5, G5; 2. A5, B5, C6, D6; 3. E5, D5, C5, B4; 4. A4, G4, F#4, E4.

